

**AOJIE** 奥杰模塑  
AOJIE PLASTIC MOULD

PROFESSIONAL MOULD MANUFACTURER

专业模具制造商

Aojie Plastic Mould

**AOJIE**  
Motorcycle  
mould

Catalogue

台州市黄岩奥杰模塑股份有限公司

TAIZHOU HUANGYAN AOJIE PLASTIC MOULD CO.,LTD.

地址/Add:中国浙江省台州市黄岩新前新江路452号

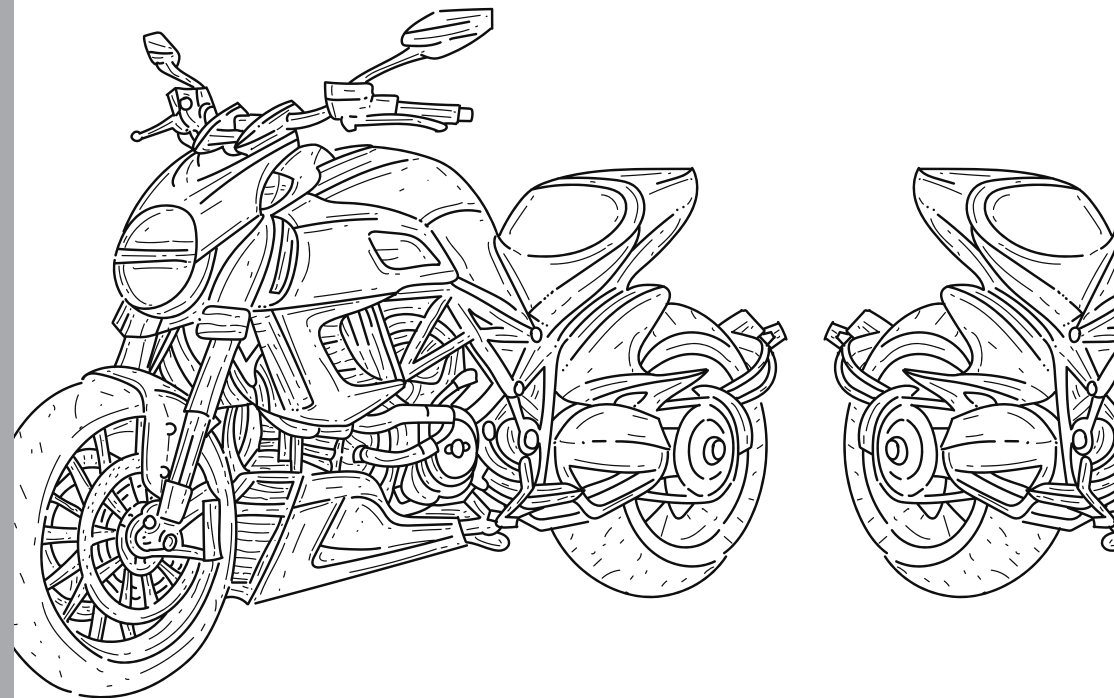
No. 452, Xinjiang Road, Xinqian, Huangyan TaiZhou, Zhejiang, China.

Tel:0086-576-84604333/84621122/84362511/84633668

Mobile:0086-13857631000/13656596099/13615860315

E-mail:sales@ajmould.com

Fax:0086-576-84633668



## Profile

企业简介

## 10+ years molding experience

奥杰模具，10多年专注模具的制造与开发

Taizhou Huangyan Aojie Mould Co., Ltd is one of the leading mould manufacturers, located in Huangyan-Mould Hometown of China. We specialized in designing & manufacturing plastic injection moulds. Our products include motorcycle & scooter mould, auto parts mould industrial mould, houseware mould.

We also have our own injection workshop to finish mould trial and mass production independently. Here, customer can enjoy the one-stop service from design, mould processing, mould trial to mass production.

台州市黄岩奥杰模塑股份有限公司座落在模具之乡-黄岩，是一家专业从事注塑模具设计与制造的公司。产品类目涉及摩托车 & 电动车模具，汽车塑件模具，工业用品模具及日用品模具。奥杰拥有专门的注塑车间用于调试模具。在我们这里，客户可享受从模具设计，加工，试模到批量生产的一条龙服务。







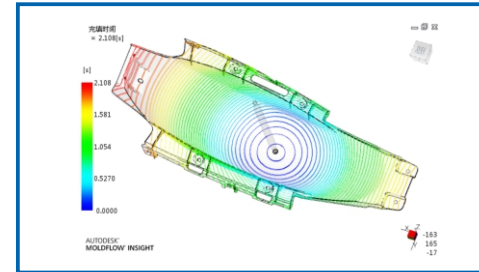
## R&D 设计研发

AOJIE employed many outstanding professional technicians, purchased advanced processing equipment to build technology center. We are an efficient team. We have 10 senior engineers, more than 150 qualified technicians, and over 30 technical designers. We use international advanced development software (CATIA, UG, PRO/E) for product development, mould design, analysis, processing and quality control. We have passed ISO9001 quality system certification.

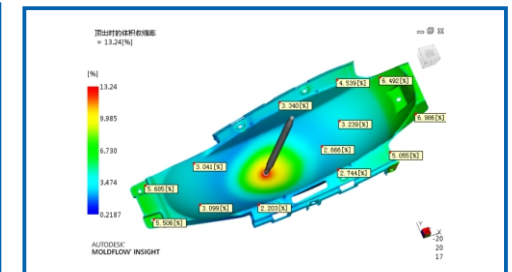
公司不惜重金引进大批优秀的专业技术人员及先进加工设备，组建了技术中心及一支高效率的技术团队。我们有10位高级工程师，30多位设计师及150多位技术工人。采用国际先进的开发软件CATIA, UG, PRO/E等进行产品开发、模具设计、分析、加工和品质控制。通过了ISO9001质量体系认证。

## Mode flow analysis

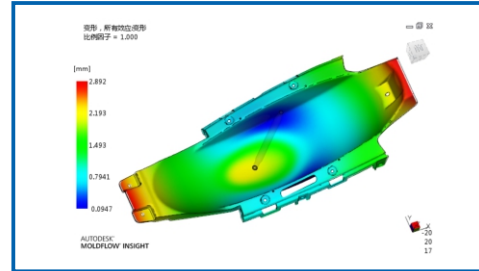
### 模流分析



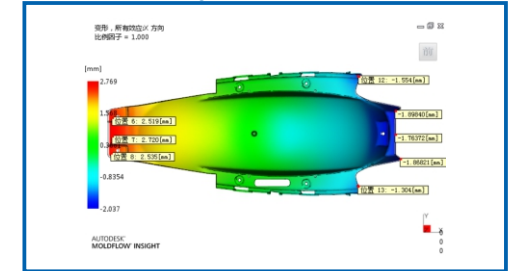
• Fill time- contour/充填时间-等值线



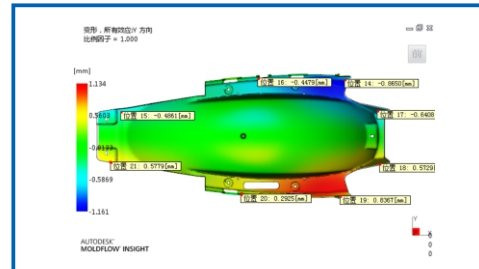
• Volumetric shrinkage/体积收缩



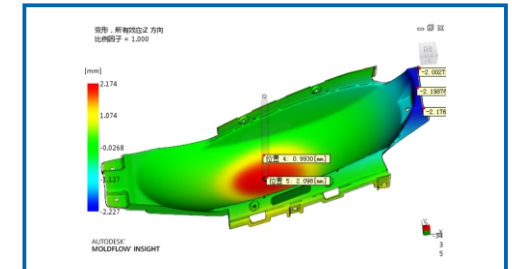
• Deflection, all effects : Deflection/整体变形



• Deflection, all effects : X Component/X向变形



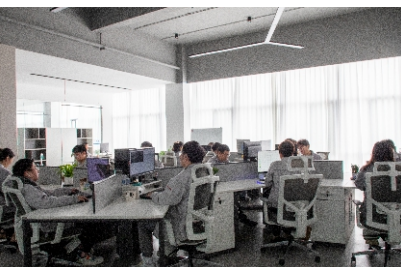
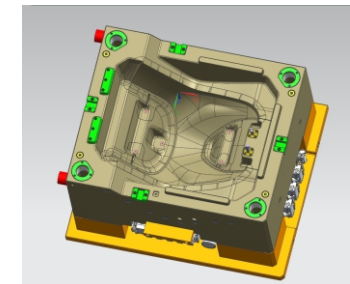
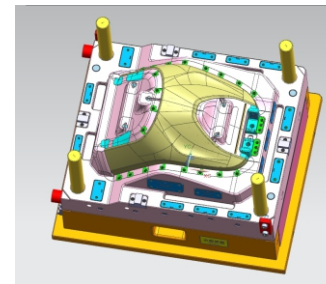
• Deflection, all effects : Y Component/Y向变形



• Deflection, all effects : Z Component/Z向变形

## Mold design

### 模具设计



• Product design department/产品设计

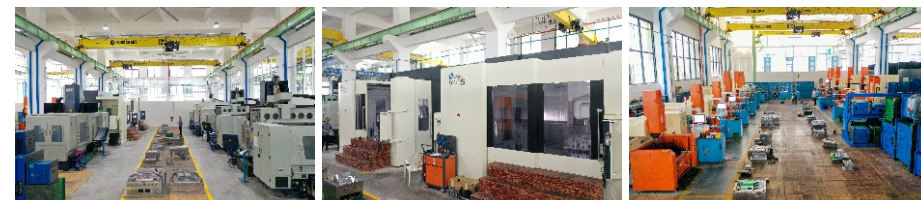


• Project discussion/项目探讨



# VALUE FOR CUSTOMERS

持续为客户创造价值



## WORKSHOP & EQUIPMENTS

车间与设备



Modern standard workshop, sophisticated equipment, is the production of high-quality mold cornerstone. AOJIE company always pays attention to the industry-leading production equipment, and constantly introduces advanced processing equipment, which provides a strong guarantee for the quality and delivery time of moulds.

现代化标准的车间，精良的设备，是生产优质模具的基石。奥杰公司时刻注意生产设备的行业领先性，不断引进先进的加工设备，为模具的品质与交期提供了有力的保障。



## Workshop equipment

车间设备



## Mold processing process

模具加工流程

01

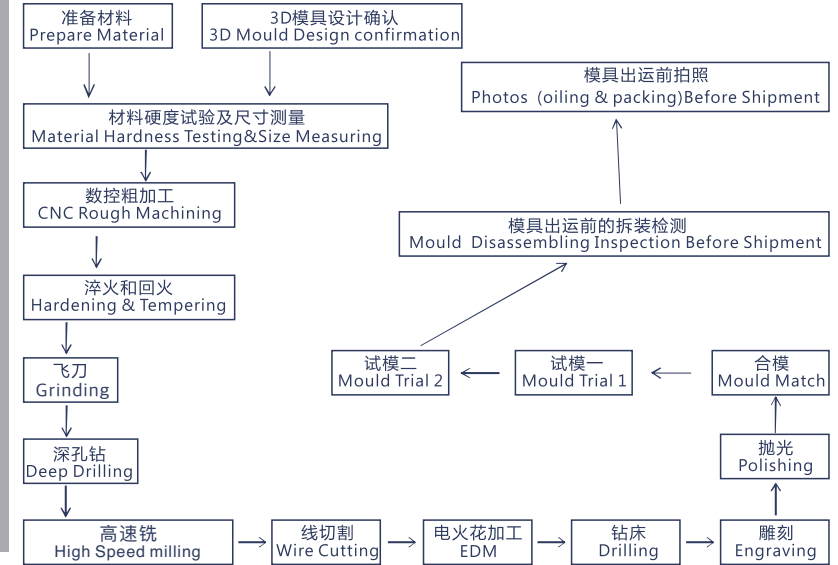
Haitian Injection  
molding machine  
2800T

02

Haitian Injection  
molding machine  
1600T

03

Haitian Injection  
molding machine  
1250T



编号/ No.	设备名称/Name	数量/Quantity	生产地/Made
01	注塑机 /Injection Machine	15	Ningbo Haitian
02	数控铣 /CNC milling Machine	8	Taiwan Gafeng
03	龙门数控铣 /GantryCNC Milling Machine	1	Huate Group
04	高速铣 /High Speed Milling Machine	8	Taiwan AWEA/Kuaijie
05	深孔钻 /Deep Hole Drilling Machine	1	Hongkong Huanqiu
06	合模机 /Mould Spotting Press Machine	3	Ningbo shunxing
07	精雕CNC / Engraving Machine	1	Beijing China
08	电火花 /EDM	10	Shanghai Hanba
09	磨床 /Grinding Machine	7	Taiwan Jiande
10	石墨 /Graphite Carving Machine	10	Taizhou Deien
11	钻床 /Drilling Machine	5	Shenyang China
12	三坐标测量仪 /CMM	1	SEREIN

## Project management

项目管理

01

安排固定的项目经理负责每个项目全程跟踪，同客户单一接口，一票到底。  
Arrange a project manager to control the whole mould process.

02

定期（每周）向客户以进度表格并配以模具照片反馈项目进度。  
Report to the customers for the each mould progress every 7-10 days with mould photos.

03

快速反应，接到客户需求12小时内作出反应与采取措施。  
Respond quickly, respond to customer requests within 12 hours and take action.

04

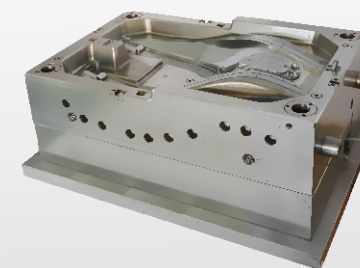
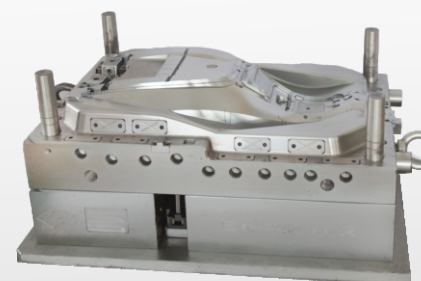
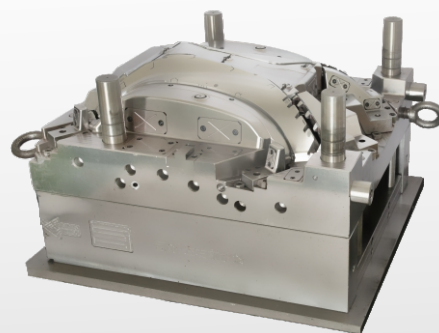
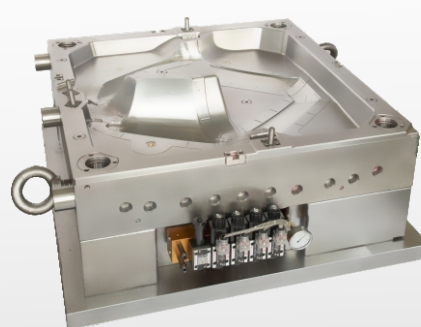
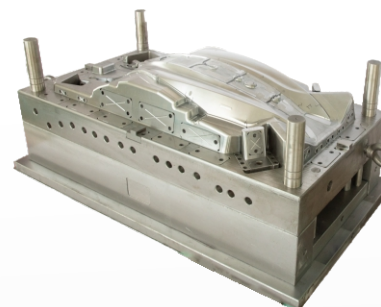
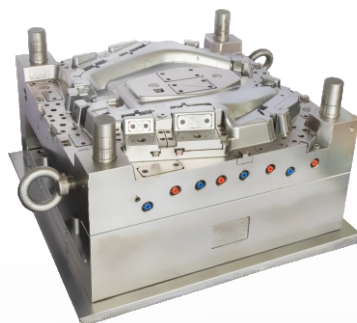
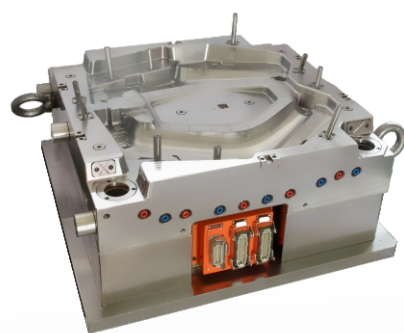
数字化系统可以保证我们的计划制定、过程控制更简单高效。  
The digital system ensures that our planning and process control are simpler and more efficient.





# MOTORCYCLE MOULD

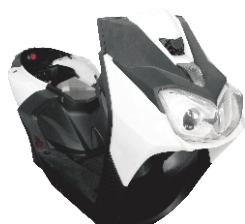
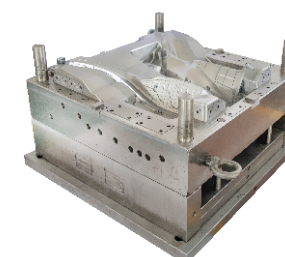
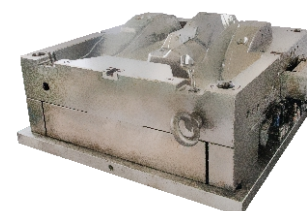
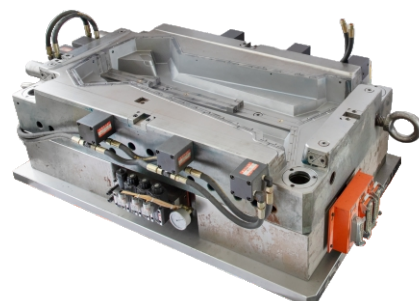
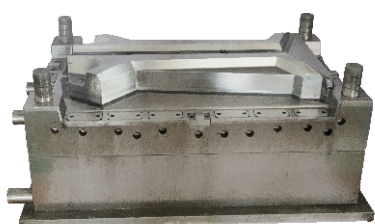
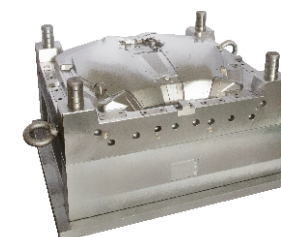
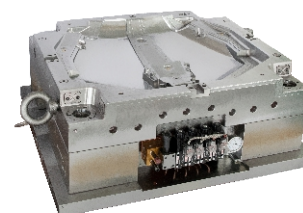
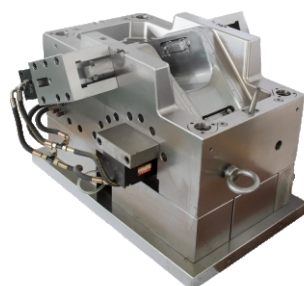
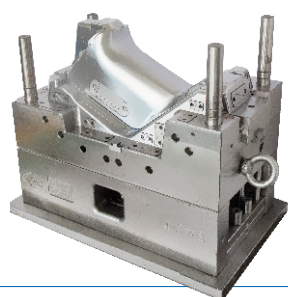
摩托车模具





# MOTORCYCLE MOULD

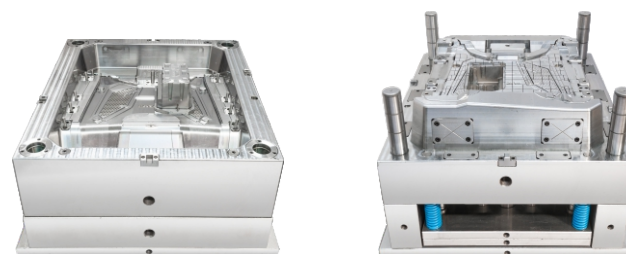
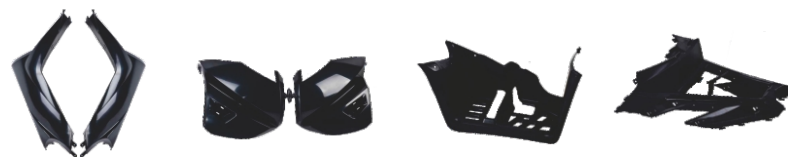
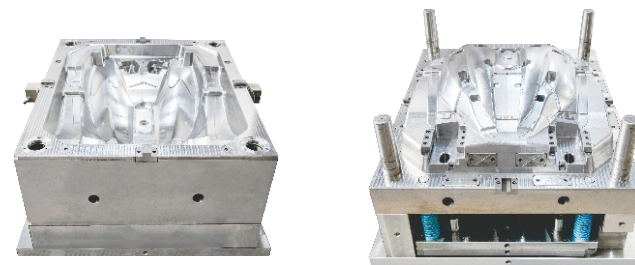
摩托车模具





# MOTORCYCLE MOULD

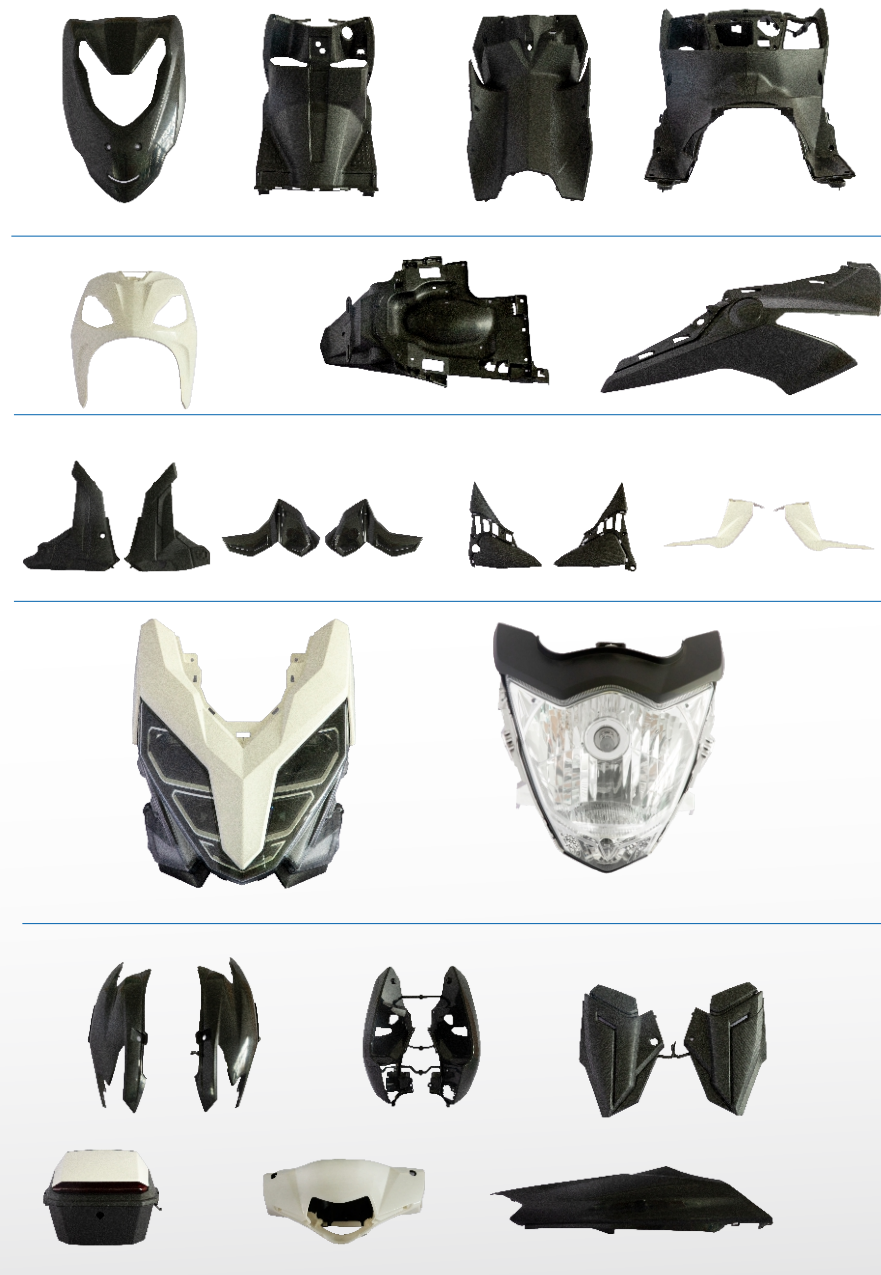
摩托车模具





# SAMPLE SHOW

摩托车样品





## Quality assurance

质量保证

Raw Material Test 模具原料检查	NDT Test 模料检验	Material Certificate 材质证明书	NDT Report 模料探伤报告	Hardness & size Test Report 硬度、尺寸检测报告
	Standard Component 标准件检验	Hardness & size Test Report 硬度、尺寸检测报告		Operation Specifications 使用规格表及说明
	Mould Base Test 模架检验	Mould Base Report 标准模架检测报告		
	Mould Hotrunner Test 热流道检测	Hotrunner Purchasing Report 热流道购买品质保证书		
	Electrode Test 电极检测	Electrode Test Report 电极检测报告		
Process Inspection 过程检验	Test Each Machining（CNC,EDM,Polishing） 机加工工序检测（加工中心、电火花等）		Process Test Report过程检测报告	
	Heat Treatment Test 热处理检测		Quenching and High Temperature Tempering, Nitrogenation, Distressing, Queching, Nitrogen- carturization调质、去应力、氮化、淬火、碳氮共渗	
	Assembly Process Test 装配工序检测		Inspection Report of Mould Accuracy 配模精度检测报告	
	Mould Testing 试模检测		Inspection Report of Mould Test 试模检测报告	
	Mould-Disassembly Test 拆模检测		Inspection Report of Mould-Disassembly Test 拆模检测报告	
Product Test 产品检测	FAI ALL Size Test FAI 全尺寸检测	CMM Test 三坐标检测中心	Inspection Report of Mould-Testing Samples 试模样件检测	
Delivery Inspection 出运检验	Mould Inspection Mould base&mould appearance,injection system,cavity layout, inserts/sliders/lifters/cavity&core,ejection system,cooling system. 模具检验 ( 模架及外观 浇注系统 排位及镶件 滑块及斜顶 成型部分 顶出系统 冷却系统 )			Shipment Check List 模具出运检查表
	Packing Inspection（Munual,Size,Collocation,Etc.） 包装检验（包装的材质、尺寸、配合等）			The Report of Packing 包装评审报告

## Customers

供应商



## Partners

合作伙伴



AOJIE keeps "Based on honesty, developed with innovation" as our developing idea.

AOJIE MOULD warmly invites you to visit our company and establish long-term business relationship with us.

奥杰人时刻以“诚信立足，创新致远”为发展理念。

奥杰模塑热忱欢迎您莅临参观我司，建立长期的合作关系！

## Market

市场

